

2011 Census Results for Buckinghamshire

First release: 16th July 2012 – Age structure of Buckinghamshire county and districts
Produced by the Research Team, Buckinghamshire County Council – research@buckscc.gov.uk

Buckinghamshire Summary

Overall Population

- The total population of Buckinghamshire increased from 479,000 in 2001 to 505,300 in 2011 (5.5% increase, 26,300 people) – taking the population of the county to over half a million people. This compares to a 7.1% increase in the population of England and Wales (7.9% South East), which is the largest rise in any 10 yr period since the census began in 1801.

Children and Young People

- Smaller increases in the number of children and young people aged 0-19 in the population from 123,000 to 126,500 (a 2.9% increase in the number of people), with the exception of those aged 5-9, where the population decreased slightly from 31,600 to 30,900 (a 2.1% decrease).
- There has been a slight decline in the proportion of children and young people aged 0-19 in the Buckinghamshire population (25.7% in 2001 to 25.0% in 2011). Other age groups now make up a larger proportion of the population than children and young people – these are generally the older age groups.

Adults

- A small (4.3%) increase in the number of 20-24 yr olds when compared to 2001 (1,100 people).
- Reduction in the 25 to 39 yr olds from 2001, both in the number of people, which fell from 102,400 to 91,400 (a 10.7% decrease in the number of people), and as a proportion of the population (21.4% in 2001 to 18.1% in 2011).
- Increases in the number of 40 to 59 yr olds in the population from 135,600 in 2001 to 146,000 in this census release - a 7.7% increase.
- The proportion of 40 to 59 yr olds in the Buckinghamshire population is similar to 2001 (increased from 28.3% of the Bucks population to 28.9% in this census release).
- Overall the number of 20-59 yr olds has remained relatively stable increasing by 500 people since 2001 (a 0.2% increase), but as the population has grown and is ageing, the proportion of 20-59 yr olds in the population has fallen from 54.9% in 2001 to 52.1% in 2011.

Older People

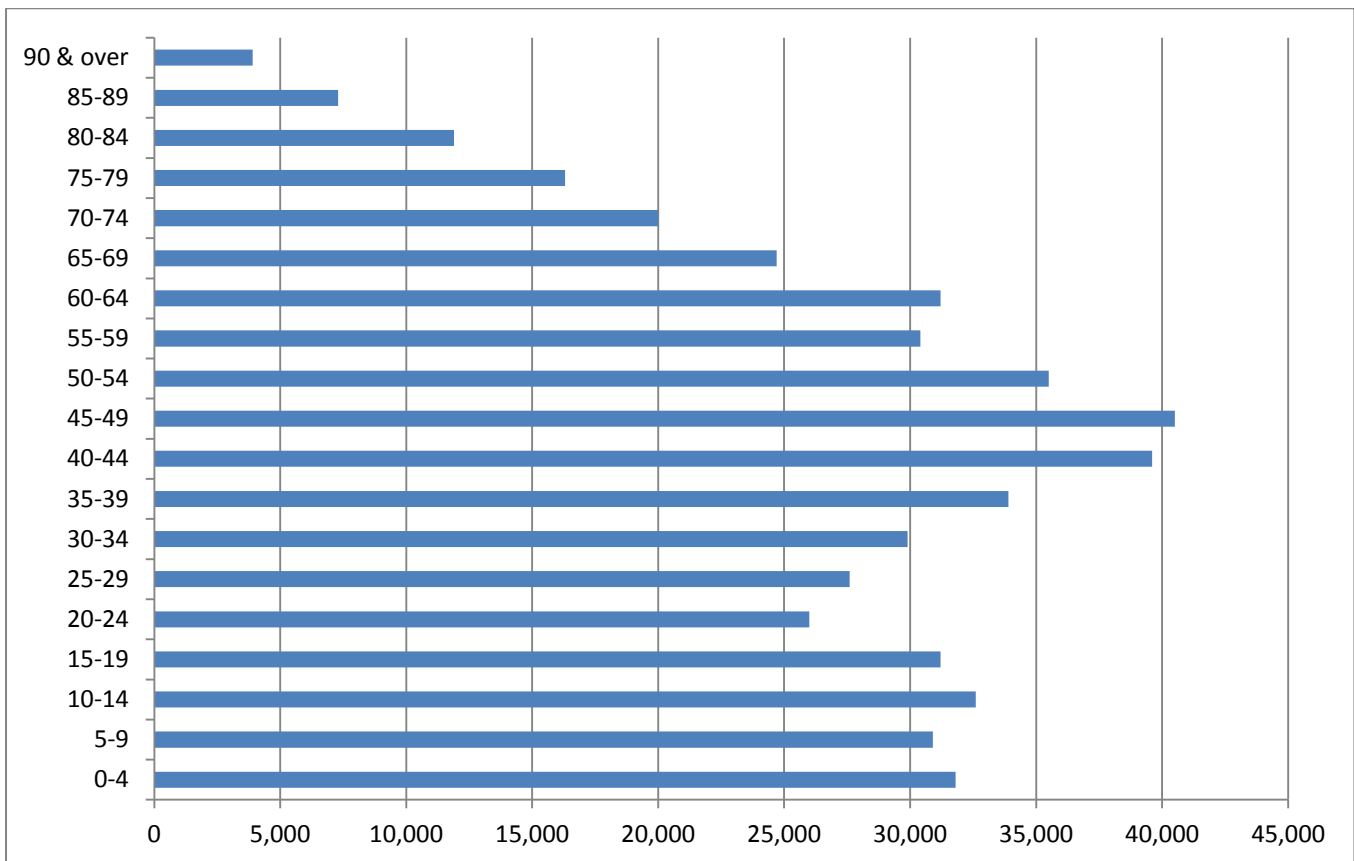
- Large increases in the number of older people aged 60 or over as the population ages, from 93,200 to 115,300 – an increase of 22,100 (23.8%). The 23.8% increase in the number of 60+ yr olds in Buckinghamshire compares with a 19.0% increase in the South East and a 16.0% increase in England.
- Note that 16.6% of the Buckinghamshire's population are now aged 65 yrs and over (14.5% in 2001), higher than the national proportion for England and Wales which is 16.4% - the highest seen in any census.
- Just under ¼ of all Buckinghamshire residents are 60+ (22.8%)
- Very large percentage increase of 27.7% in the most elderly aged 80 and over – increasing from 18,100 in the 2001 census to 23,100 in this census release (5,000 more people).

Figures are rounded to the nearest 100. Unrounded 2011 figures to be included in subsequent releases.

Please see county and district graphs below, which show the 2011 population structure and profile as well as how the population has changed since the 2001 census.

Buckinghamshire – 2011 Population Structure

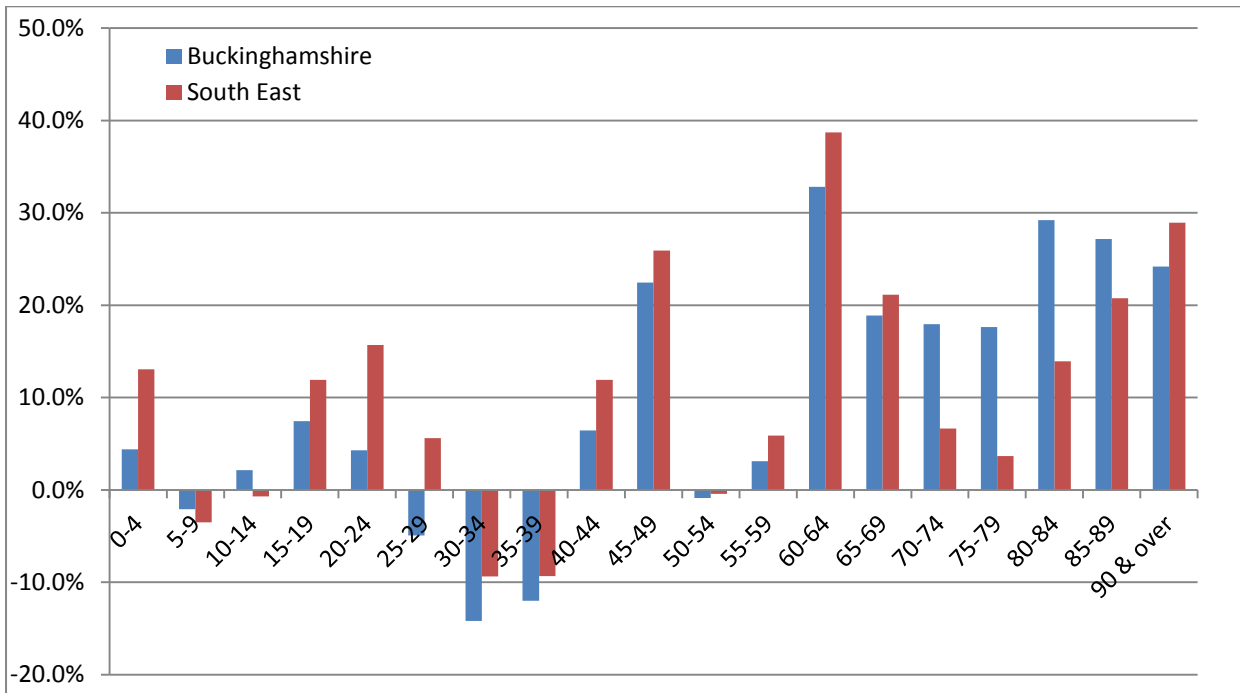
Buckinghamshire population structure as at 2011 in 5 year age bands:



	2011 population	2011 % population profile
0-4	31,800	6.3%
5-9	30,900	6.1%
10-14	32,600	6.5%
15-19	31,200	6.2%
20-24	26,000	5.1%
25-29	27,600	5.5%
30-34	29,900	5.9%
35-39	33,900	6.7%
40-44	39,600	7.8%
45-49	40,500	8.0%
50-54	35,500	7.0%
55-59	30,400	6.0%
60-64	31,200	6.2%
65-69	24,700	4.9%
70-74	20,000	4.0%
75-79	16,300	3.2%
80-84	11,900	2.4%
85-89	7,300	1.4%
90 & over	3,900	0.8%
Total	505,300	100.0%

Buckinghamshire Population Change – 2001 to 2011 Census

Percentage change in 5 yr age bands between 2001 and 2011 – Buckinghamshire & South East:

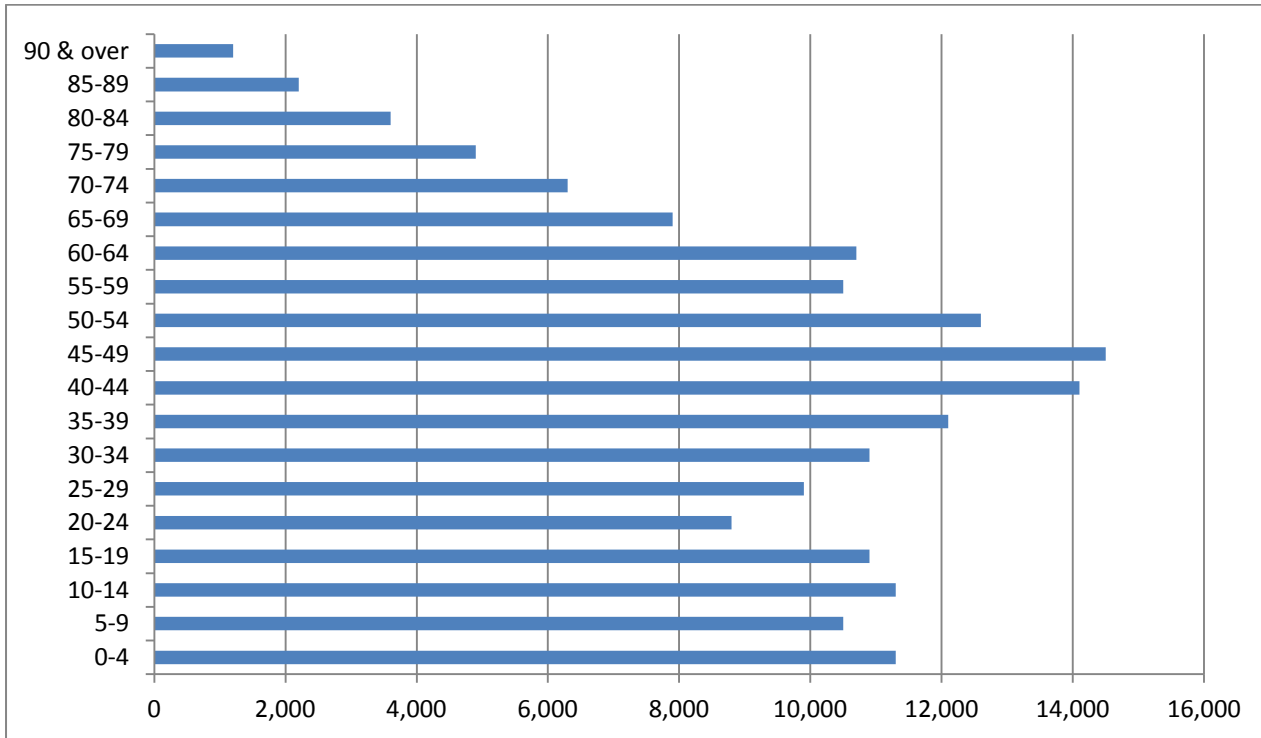


	2001 population	2011 population	Change in numbers	% Change
0-4	30,457	31,800	1,343	4.4%
5-9	31,561	30,900	-661	-2.1%
10-14	31,916	32,600	684	2.1%
15-19	29,039	31,200	2,161	7.4%
20-24	24,931	26,000	1,069	4.3%
25-29	29,024	27,600	-1,424	-4.9%
30-34	34,835	29,900	-4,935	-14.2%
35-39	38,521	33,900	-4,621	-12.0%
40-44	37,207	39,600	2,393	6.4%
45-49	33,073	40,500	7,427	22.5%
50-54	35,812	35,500	-312	-0.9%
55-59	29,484	30,400	916	3.1%
60-64	23,489	31,200	7,711	32.8%
65-69	20,775	24,700	3,925	18.9%
70-74	16,955	20,000	3,045	18.0%
75-79	13,857	16,300	2,443	17.6%
80-84	9,210	11,900	2,690	29.2%
85-89	5,740	7,300	1,560	27.2%
90 & over	3,140	3,900	760	24.2%
Total	479,026	505,300	26,274	5.5%

Aylesbury Vale – 2011 Population Structure

The Aylesbury Vale population in 2011 stands at 174,100 compared with 165,748 in 2001. This represents a 5.1% increase.

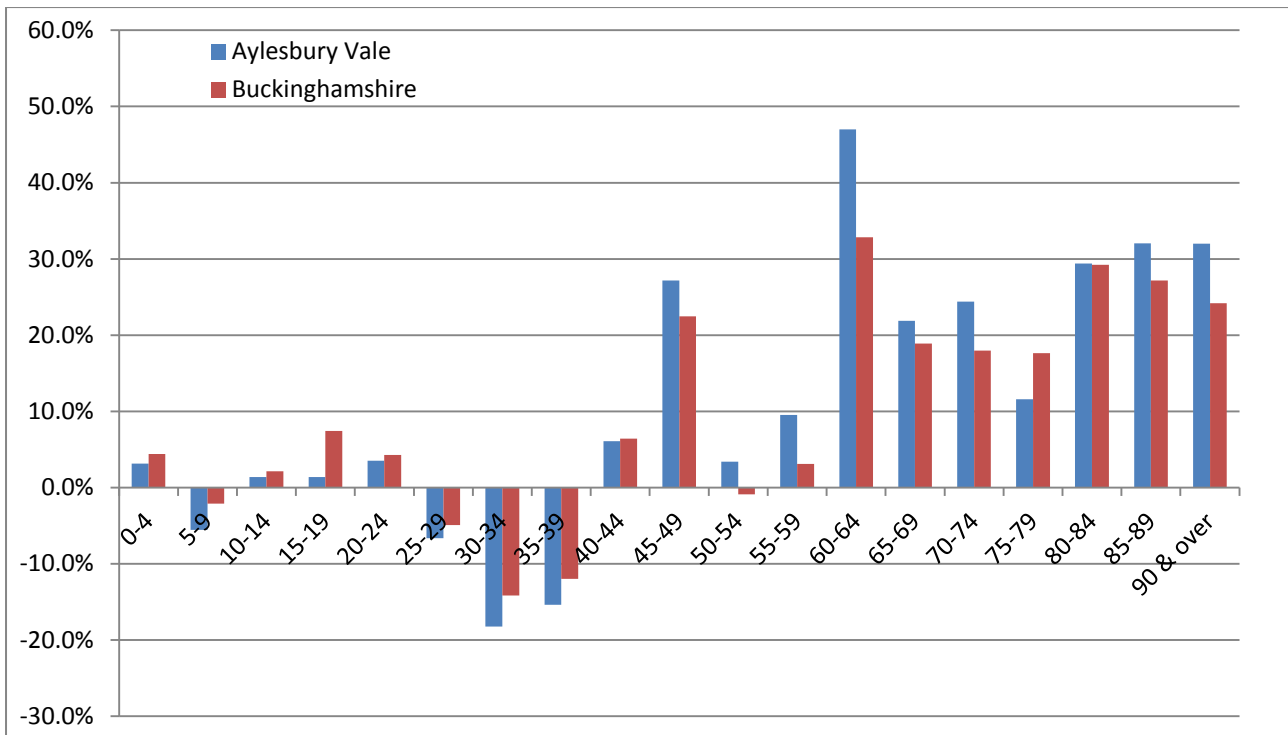
Aylesbury Vale population structure as at 2011 in 5 year age bands:



	2011 population	2011 % population profile
0-4	11,300	6.5%
5-9	10,500	6.0%
10-14	11,300	6.5%
15-19	10,900	6.3%
20-24	8,800	5.1%
25-29	9,900	5.7%
30-34	10,900	6.3%
35-39	12,100	6.9%
40-44	14,100	8.1%
45-49	14,500	8.3%
50-54	12,600	7.2%
55-59	10,500	6.0%
60-64	10,700	6.1%
65-69	7,900	4.5%
70-74	6,300	3.6%
75-79	4,900	2.8%
80-84	3,600	2.1%
85-89	2,200	1.3%
90 & over	1,200	0.7%
Total	174,100	100.0%

Aylesbury Vale Population Change – 2001 to 2011 Census

Percentage change in 5 year age bands between 2001 and 2011 – Aylesbury Vale and Buckinghamshire:

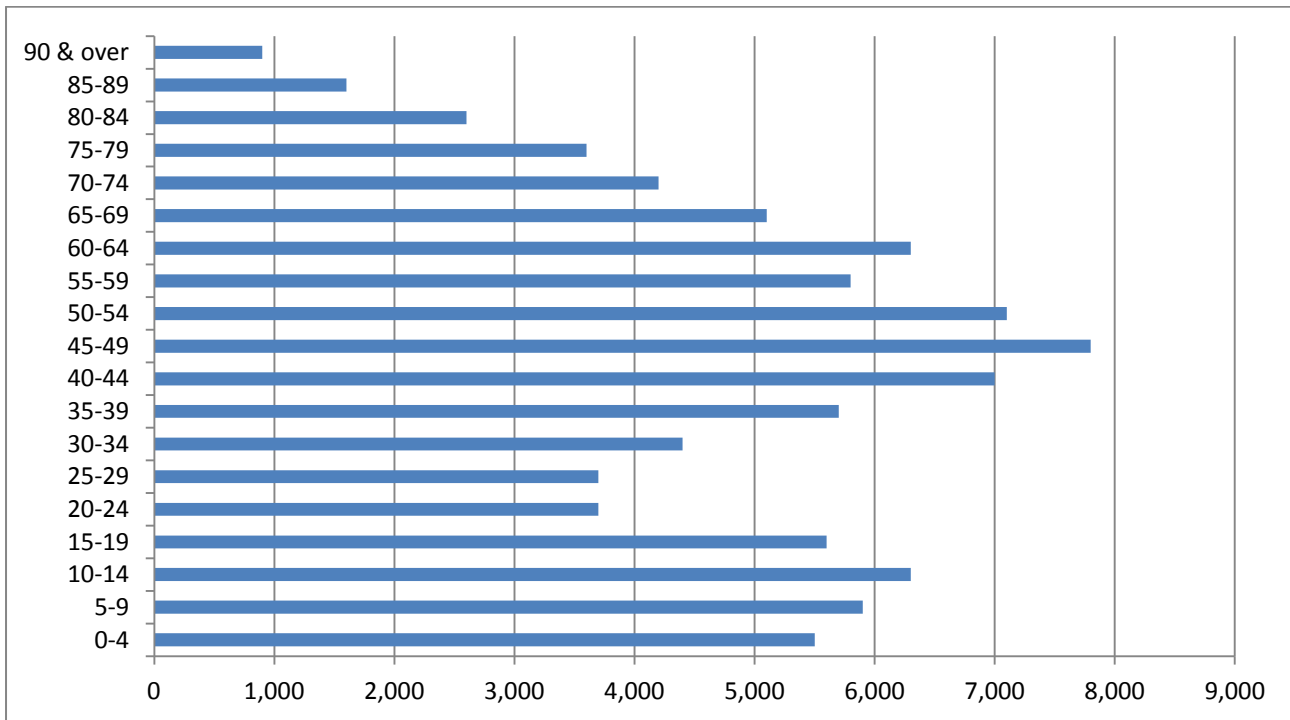


	2001 population	2011 population	Change in numbers	% Change
0-4	10,955	11,300	345	3.1%
5-9	11,118	10,500	-618	-5.6%
10-14	11,147	11,300	153	1.4%
15-19	10,752	10,900	148	1.4%
20-24	8,502	8,800	298	3.5%
25-29	10,604	9,900	-704	-6.6%
30-34	13,334	10,900	-2,434	-18.3%
35-39	14,302	12,100	-2,202	-15.4%
40-44	13,289	14,100	811	6.1%
45-49	11,401	14,500	3,099	27.2%
50-54	12,185	12,600	415	3.4%
55-59	9,586	10,500	914	9.5%
60-64	7,279	10,700	3,421	47.0%
65-69	6,481	7,900	1,419	21.9%
70-74	5,064	6,300	1,236	24.4%
75-79	4,392	4,900	508	11.6%
80-84	2,782	3,600	818	29.4%
85-89	1,666	2,200	534	32.1%
90 & over	909	1,200	291	32.0%
Total	165,748	174,100	8,352	5.0%

Chiltern – 2011 Population Structure

The Chiltern population in 2011 stands at 92,600 compared with 89,228 in 2001. This represents a 3.8% increase.

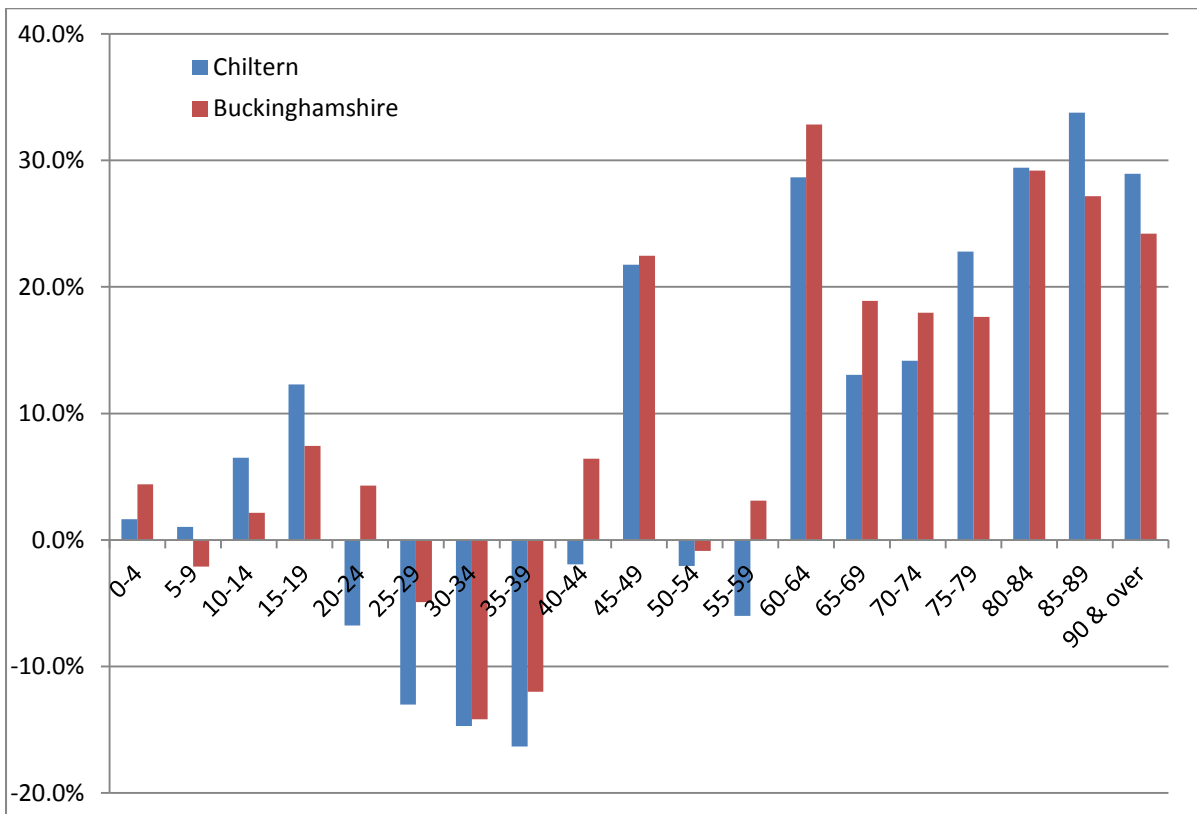
Chiltern population structure as at 2011 in 5 year age bands:



	2011 population	2011 % population profile
0-4	5,500	5.9%
5-9	5,900	6.4%
10-14	6,300	6.8%
15-19	5,600	6.0%
20-24	3,700	4.0%
25-29	3,700	4.0%
30-34	4,400	4.7%
35-39	5,700	6.1%
40-44	7,000	7.5%
45-49	7,800	8.4%
50-54	7,100	7.7%
55-59	5,800	6.3%
60-64	6,300	6.8%
65-69	5,100	5.5%
70-74	4,200	4.5%
75-79	3,600	3.9%
80-84	2,600	2.8%
85-89	1,600	1.7%
90 & over	900	1.0%
Total	92,600	100.0%

Chiltern Population Change – 2001 to 2011 Census

Percentage change in 5 year age bands between 2001 and 2011 – Chiltern and Buckinghamshire:

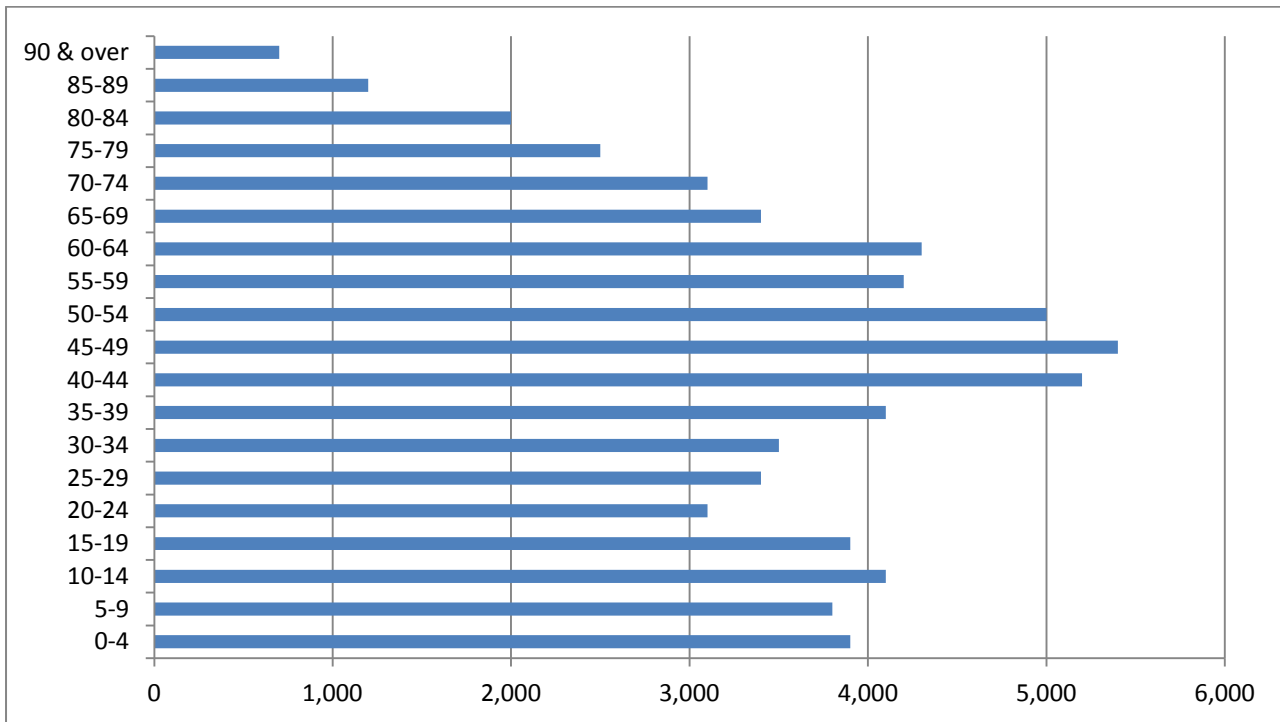


	2001 population	2011 population	Change in numbers	% Change
0-4	5,411	5,500	89	1.6%
5-9	5,839	5,900	61	1.0%
10-14	5,915	6,300	385	6.5%
15-19	4,987	5,600	613	12.3%
20-24	3,968	3,700	-268	-6.8%
25-29	4,253	3,700	-553	-13.0%
30-34	5,159	4,400	-759	-14.7%
35-39	6,812	5,700	-1,112	-16.3%
40-44	7,137	7,000	-137	-1.9%
45-49	6,406	7,800	1,394	21.8%
50-54	7,249	7,100	-149	-2.1%
55-59	6,171	5,800	-371	-6.0%
60-64	4,896	6,300	1,404	28.7%
65-69	4,511	5,100	589	13.1%
70-74	3,679	4,200	521	14.2%
75-79	2,932	3,600	668	22.8%
80-84	2,009	2,600	591	29.4%
85-89	1,196	1,600	404	33.8%
90 & over	698	900	202	28.9%
Total	89,228	92,600	3,372	3.8%

South Bucks – 2011 Population Structure

The South Bucks population in 2011 stands at 66,900 compared with 61,945 in 2001. This represents an 8.0% increase.

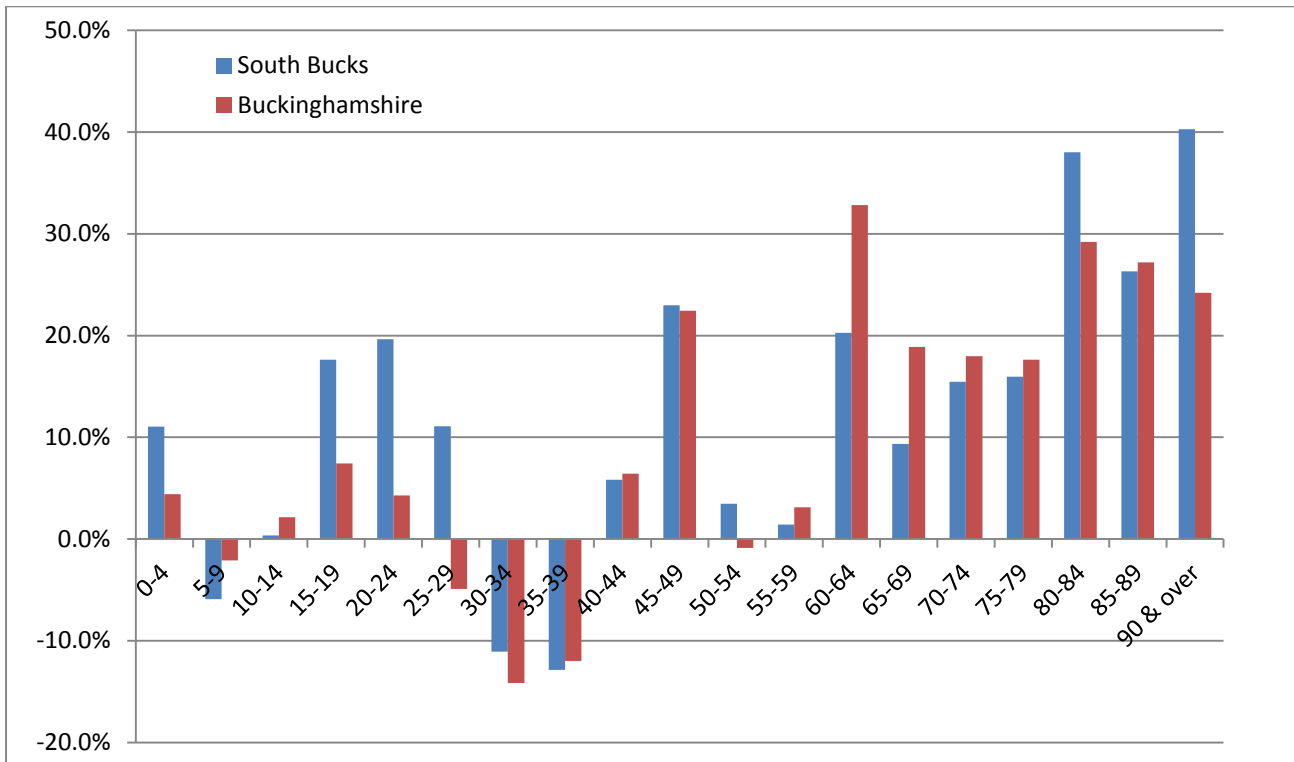
South Bucks population structure as at 2011 in 5 year age bands:



	2011 population	2011 % population profile
0-4	3,900	5.8%
5-9	3,800	5.7%
10-14	4,100	6.1%
15-19	3,900	5.8%
20-24	3,100	4.6%
25-29	3,400	5.1%
30-34	3,500	5.2%
35-39	4,100	6.1%
40-44	5,200	7.8%
45-49	5,400	8.1%
50-54	5,000	7.5%
55-59	4,200	6.3%
60-64	4,300	6.4%
65-69	3,400	5.1%
70-74	3,100	4.6%
75-79	2,500	3.7%
80-84	2,000	3.0%
85-89	1,200	1.8%
90 & over	700	1.0%
Total	66,900	100.0%

South Bucks Population Change – 2001 to 2011 Census

Percentage change in 5 yr age bands between 2001 and 2011 – South Bucks & Buckinghamshire:

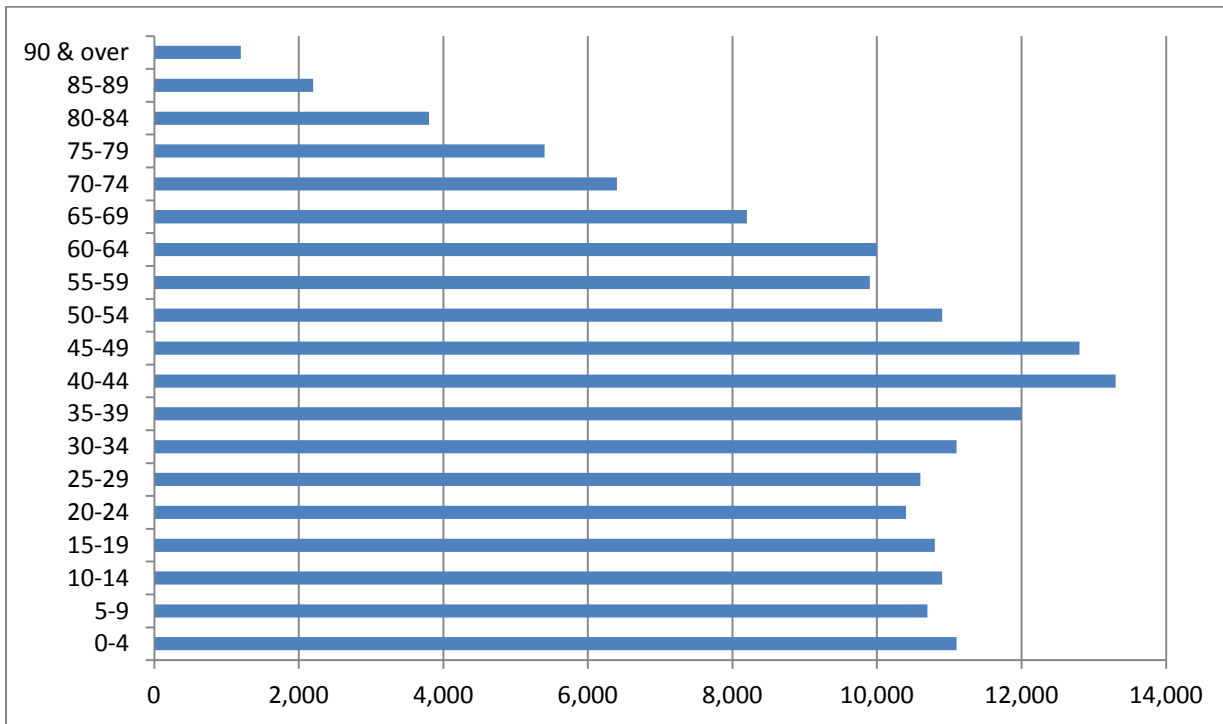


	2001 population	2011 population	Change in numbers	% Change
0-4	3,512	3,900	388	11.0%
5-9	4,039	3,800	-239	-5.9%
10-14	4,086	4,100	14	0.3%
15-19	3,316	3,900	584	17.6%
20-24	2,591	3,100	509	19.6%
25-29	3,061	3,400	339	11.1%
30-34	3,935	3,500	-435	-11.1%
35-39	4,705	4,100	-605	-12.9%
40-44	4,913	5,200	287	5.8%
45-49	4,391	5,400	1,009	23.0%
50-54	4,832	5,000	168	3.5%
55-59	4,141	4,200	59	1.4%
60-64	3,575	4,300	725	20.3%
65-69	3,109	3,400	291	9.4%
70-74	2,685	3,100	415	15.5%
75-79	2,156	2,500	344	16.0%
80-84	1,449	2,000	551	38.0%
85-89	950	1,200	250	26.3%
90 & over	499	700	201	40.3%
Total	61,945	66,900	4,955	8.0%

Wycombe – 2011 Population Structure

The Wycombe population in 2011 stands at 171,700 compared with 162,105 in 2001. This represents a 5.9% increase.

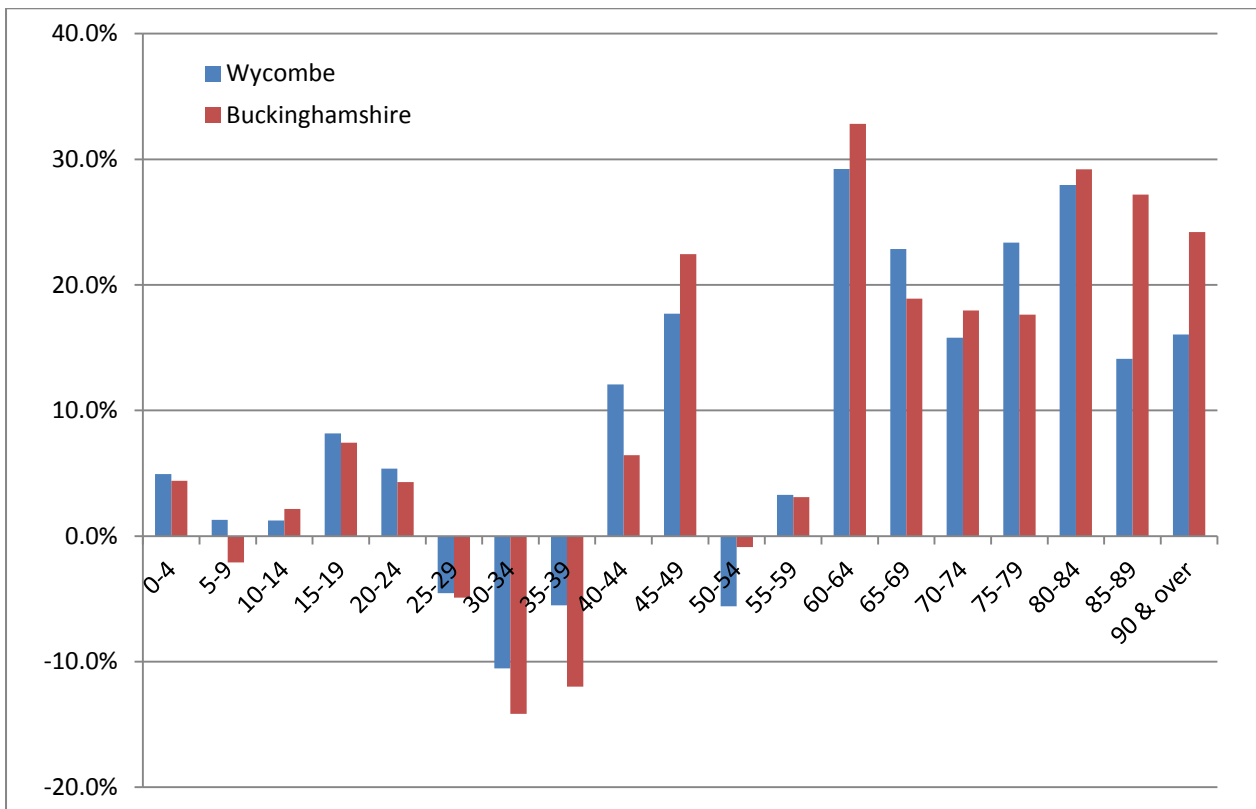
Wycombe population structure as at 2011 in 5 year age bands:



	2011 population	2011 % population profile
0-4	11,100	6.5%
5-9	10,700	6.2%
10-14	10,900	6.3%
15-19	10,800	6.3%
20-24	10,400	6.1%
25-29	10,600	6.2%
30-34	11,100	6.5%
35-39	12,000	7.0%
40-44	13,300	7.7%
45-49	12,800	7.5%
50-54	10,900	6.3%
55-59	9,900	5.8%
60-64	10,000	5.8%
65-69	8,200	4.8%
70-74	6,400	3.7%
75-79	5,400	3.1%
80-84	3,800	2.2%
85-89	2,200	1.3%
90 & over	1,200	0.7%
Total	171,700	100.0%

Wycombe Population Change – 2001 to 2011 Census

Percentage change in 5 yr age bands between 2001 and 2011 – Wycombe & Buckinghamshire:



	2001 population	2011 population	Change in numbers	% Change
0-4	10,579	11,100	521	4.9%
5-9	10,565	10,700	135	1.3%
10-14	10,768	10,900	132	1.2%
15-19	9,984	10,800	816	8.2%
20-24	9,870	10,400	530	5.4%
25-29	11,106	10,600	-506	-4.6%
30-34	12,407	11,100	-1,307	-10.5%
35-39	12,702	12,000	-702	-5.5%
40-44	11,868	13,300	1,432	12.1%
45-49	10,875	12,800	1,925	17.7%
50-54	11,546	10,900	-646	-5.6%
55-59	9,586	9,900	314	3.3%
60-64	7,739	10,000	2,261	29.2%
65-69	6,674	8,200	1,526	22.9%
70-74	5,527	6,400	873	15.8%
75-79	4,377	5,400	1,023	23.4%
80-84	2,970	3,800	830	27.9%
85-89	1,928	2,200	272	14.1%
90 & over	1,034	1,200	166	16.1%
Total	162,105	171,700	9,595	5.9%

NB: All percentage change and population profile percentages have been calculated using the sum of the populations in each area firms the 5 year age band groups, rather than the total population figures. These figures may differ due to rounding by ONS.